

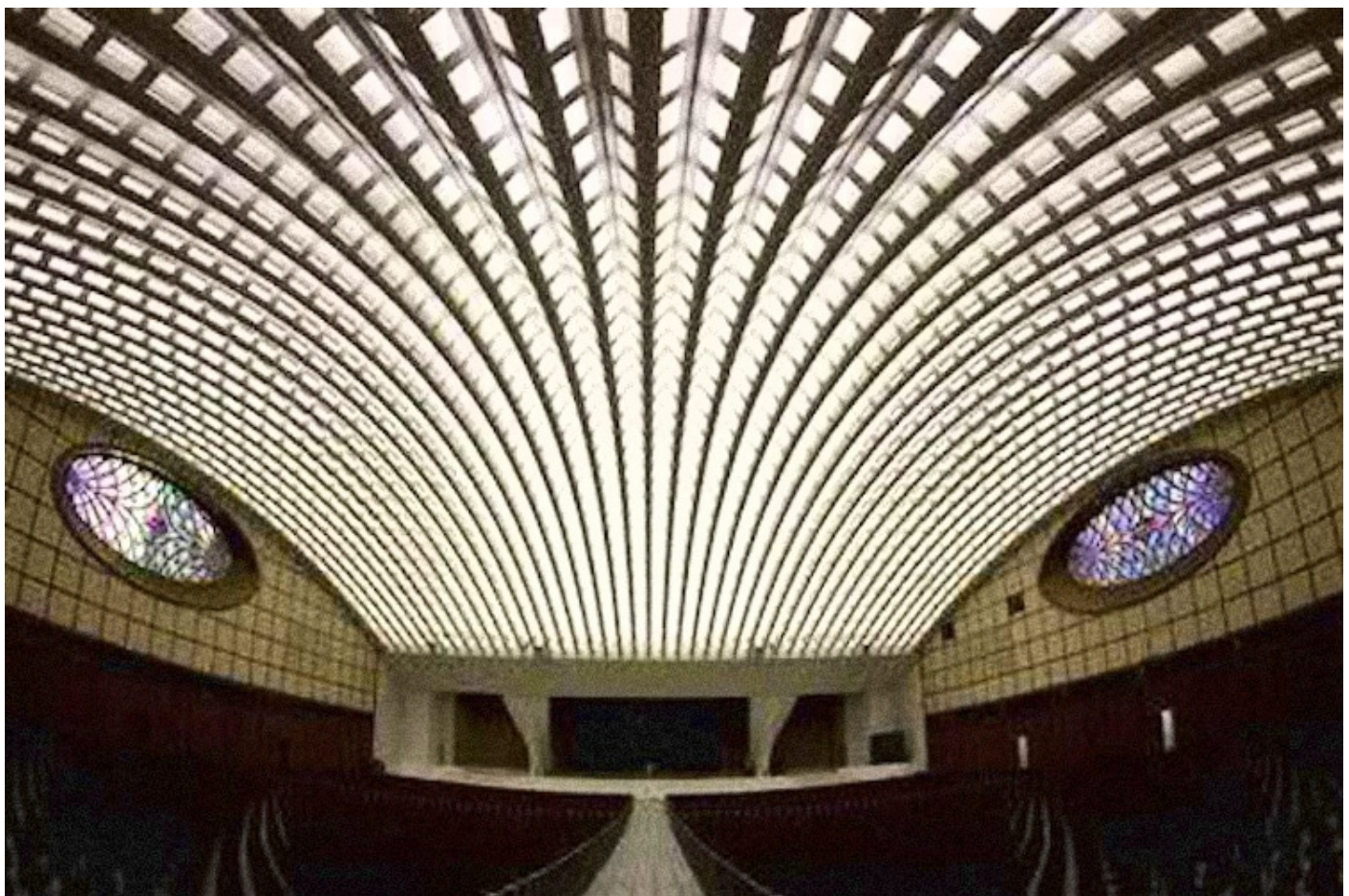


WAKING TIMES



INSIDE THE POPE'S REPTILIAN AUDIENCE HALL IN VATICAN CITY

January 29, 2018



Get the latest Waking Times articles delivered to your inbox. [Sign up here.](#)

Buck Rogers, *Staff Writer*

Waking Times



a snake. Completed in 1971, the peculiar structure sits only partly within the actual boundary of the City/State, and the whole building, inside and out is unmistakably reptilian.

It's officially named the Paul VI Audience Hall, after Pope Paul the Sixth, who reigned from 1963 to 1978. Apparently he was a decent Pope, although he has been implicated in covering up or ignoring the sexual abuse of young boys by members of the Catholic clergy. He was alerted to these scandals in a letter by Rev. Gerald M.C. Fitzgerald in August 1963, and was advised to take serious action against pedophiles, although he never did anything.

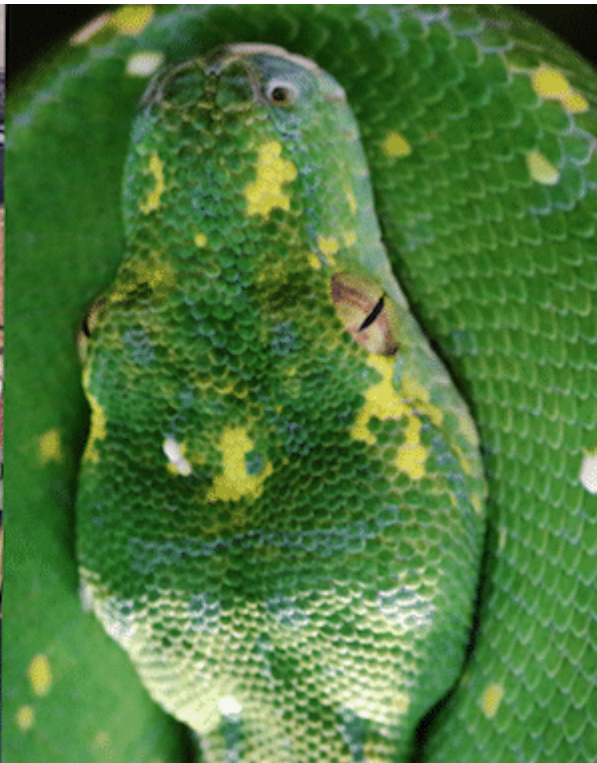
In this overhead photo, the building stands out for its unusual shape, which is innocuous enough until juxtaposed with a viper's head.



Notice the similarities in the shape, the roofing and scaly skin, and the placement of eyes



WAKING TIMES



Designed by award-winning Italian architect Pier Luigi Nervi, the building is designed to seat 6300 people for conference with the Pope himself, who presents from a stage in front of a giant Satanic looking sculpture. Named *The Resurrection*, *La Resurrezione*, the sculpture was designed by or Pericle Fazzini. and was inspired by the idea of Christ rising from the blast of a nuclear explosion.

"Suddenly there came to me the idea of Christ preaching peace for 2,000 years, and the place where He prayed for the last time: the olive grove of Gethsemane," said Mr. Fazzini in a book about the work. "I had the idea of depicting Christ as if He were rising again from the explosion of this large olive grove, peaceful site of His last



Oddly, from an angle, the head of Christ looks suspiciously like the head of a snake with its fangs open, prepared to bite.





the room unmistakably resembles a snake, even though some write this off as delusional thinking, warning people away from considering it's deeper meaning.

Human pattern recognition is wonky. We tend to see faces in clouds and rock formations. Same here. Pareidolia it is called. The photographer specifically selected lens and position *as to invoke snake imagery*.

There is no snake in the real hall. There is only one in the distorted picture, because it was a neat feature to put into the picture.” [Source]

Here is the view from the entry way. Is this just a trick on the eyes?





The massive

stained-glass windows on the sides of the hall are also quite reptilian in their design, featuring vertical slits in oval-shaped eyes.





Symbolism and Esoteric Meaning

The Vatican, while located in Rome, is its own sovereign nation state, and a look around the grounds reveals **unimaginable wealth** and a plethora of strangely symbolic pieces. The famous Fontana della Pigna is a massive pine cone which is believed by many to represent the pineal gland, a tiny gland within the human brain believed to be the source of spiritual experience.